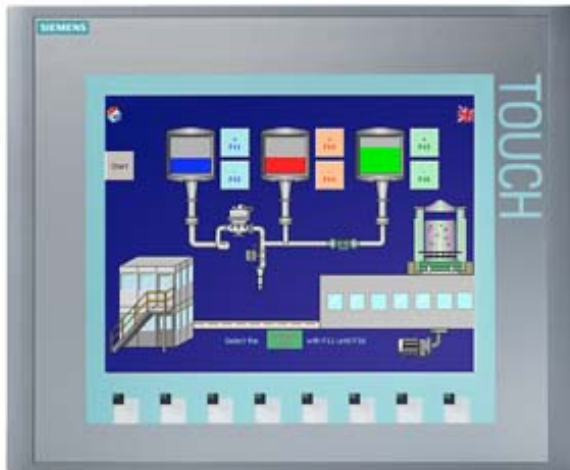


SIPLUS HMI KTP1000 Basic Color PN for medial exposure with conformal coating based on 6AV6647-0AF11-3AX0



## General information

Product type designation      KTP1000 Basic color PN

## Display

Design of display      TFT

Screen diagonal      10.4 in

Display width      211.2 mm

Display height      158.4 mm

Number of colors      256

## Resolution (pixels)

- Horizontal image resolution      640 Pixel
- Vertical image resolution      480 Pixel

## Backlighting

- MTBF backlighting (at 25 °C)      50 000 h

## Control elements

### Keyboard fonts

- Function keys
  - Number of function keys      8
- Keys with LED      No

• System keys	No
• Numeric keyboard	Yes; Onscreen keyboard
• alphanumeric keyboard	Yes; Onscreen keyboard
<b>Touch operation</b>	
• Design as touch screen	Yes

<b>Installation type/mounting</b>	
Mounting position	vertical
maximum permissible angle of inclination without external ventilation	35°

<b>Supply voltage</b>	
Type of supply voltage	DC
permissible range, lower limit (DC)	19.2 V
permissible range, upper limit (DC)	28.8 V

<b>Input current</b>	
Starting current inrush I <sup>2</sup> t	0.2 A <sup>2</sup> ·s

<b>Processor</b>	
Processor type	RISC 32-bit

<b>Memory</b>	
Flash	Yes
RAM	Yes
Memory available for user data	1 024 kbyte

<b>Type of output</b>	
Acoustics	Sound signal

<b>Time of day</b>	
<b>Clock</b>	
• Software clock	Yes

<b>Interfaces</b>	
Number of industrial Ethernet interfaces	1
Number of RS 485 interfaces	0
Number of RS 422 interfaces	0
Number of RS 232 interfaces	0
Number of USB interfaces	0
Number of 20 mA interfaces (TTY)	0
Number of parallel interfaces	0
Number of other interfaces	0
With software interfaces	No
<b>Industrial Ethernet</b>	
• Industrial Ethernet status LED	2

<b>Protocols</b>	
------------------	--

PROFINET	Yes
Supports protocol for PROFINET IO	No
PROFIBUS	No
MPI	No
<b>Protocols (Ethernet)</b>	
• TCP/IP	Yes
• DHCP	Yes
• SNMP	Yes
• DCP	Yes
• LLDP	Yes
<b>Further protocols</b>	
• EtherNet/IP	Yes
• MODBUS	Yes
<b>Degree and class of protection</b>	
IP (at the front)	IP65
IP (rear)	IP20
<b>Standards, approvals, certificates</b>	
CE mark	Yes
<b>Marine approval</b>	
• Germanischer Lloyd (GL)	No
• American Bureau of Shipping (ABS)	No
• Bureau Veritas (BV)	No
• Det Norske Veritas (DNV)	No
• Lloyds Register of Shipping (LRS)	No
• Nippon Kaiji Kyokai (Class NK)	No
• Polski Rejestr Statkow (PRS)	No
<b>Ambient conditions</b>	
Suited for indoor use	Yes
Suited for outdoor use	No
<b>Ambient temperature during operation</b>	
• Operation (vertical installation)	0 to +50 °C
— For vertical installation, min.	0 °C
— For vertical installation, max.	50 °C
• Operation (max. tilt angle)	0 to +40 °C
— At maximum tilt angle, min.	0 °C
— At maximum tilt angle, min.	40 °C
<b>Ambient temperature during storage/transportation</b>	
• min.	-20 °C
• max.	60 °C
<b>Altitude during operation relating to sea level</b>	
• Installation altitude above sea level, max.	5 000 m

<ul style="list-style-type: none"> <li>• Ambient air temperature-barometric pressure-altitude</li> </ul>	Tmin ... Tmax at 1 140 hPa ... 795 hPa (-1 000 m ... +2 000 m) // Tmin ... (Tmax - 10 K) at 795 hPa ... 658 hPa (+2 000 m ... +3 500 m) // Tmin ... (Tmax - 20 K) at 658 hPa ... 540 hPa (+3 500 m ... +5 000 m)
<b>Relative humidity</b>	
<ul style="list-style-type: none"> <li>• With condensation, tested in accordance with IEC 60068-2-38, max.</li> </ul>	100 %; RH incl. condensation/frost (no commissioning under condensation conditions)
<b>Resistance</b>	
<b>Use in stationary industrial systems</b>	
— to biologically active substances according to EN 60721-3-3	Yes; Class 3B2 mold, fungus and dry rot spores (with the exception of fauna); Class 3B3 on request
— to chemically active substances according to EN 60721-3-3	Yes; Class 3C4 (RH < 75 %) incl. salt spray acc. to EN 60068-2-52 (severity degree 3); *
— to mechanically active substances according to EN 60721-3-3	Yes; Class 3S4 incl. sand, dust, *
<b>Use on ships/at sea</b>	
— to biologically active substances according to EN 60721-3-6	Yes; Class 6B2 mold and fungal spores (excluding fauna); Class 6B3 on request
— to chemically active substances according to EN 60721-3-6	Yes; Class 6C3 (RH < 75 %) incl. salt spray acc. to EN 60068-2-52 (severity degree 3); *
— to mechanically active substances according to EN 60721-3-6	Yes; Class 6S3 incl. sand, dust; *
<b>from supply voltage 1L+</b>	
— Note regarding classification of environmental conditions acc. to EN 60721	* The supplied plug covers must remain in place over the unused interfaces during operation!

<b>Configuration</b>	
Message indicator	Yes
Alarm system (incl. buffer and acknowledgment)	Yes
Process value display (output)	Yes
Process value default (input) possible	Yes
Recipe management	Yes

<b>Languages</b>	
<b>Online languages</b>	
<ul style="list-style-type: none"> <li>• Number of online/runtime languages</li> </ul>	5
<b>Project languages</b>	
<ul style="list-style-type: none"> <li>• Languages per project</li> </ul>	32

<b>Functionality under WinCC (TIA Portal)</b>	
Libraries	Yes
Task planner	Yes
Help system	Yes
<ul style="list-style-type: none"> <li>• Number of characters per info text</li> </ul>	320
<b>Message system</b>	
<ul style="list-style-type: none"> <li>• Number of alarm classes</li> </ul>	32

• Bit messages	
— Number of bit messages	200
• Analog messages	
— Number of analog messages	15
• System messages HMI	Yes
• System messages, other (SIMATIC S7, Sinumerik, Simotion, etc.)	No
• Number of characters per message	80
• Number of process values per message	8
• Message indicator	Yes
• Message buffer	Ring buffer (n x 256 entries), retentive, maintenance-free
— Number of entries	256
— Circulating buffer	Yes
<b>Recipe management</b>	
• Number of recipes	5
• Data records per recipe	20
• Entries per data record	20
• Size of internal recipe memory	40 kbyte
• Recipe memory expandable	No
<b>Variables</b>	
• Number of variables per device	500
• Number of variables per screen	30
• Limit values	Yes
• Multiplexing	Yes
• Structures	No
<b>Images</b>	
• Number of configurable images	50
• Permanent window/default	Yes; No permanent window can be configured
• Image selection by PLC	Yes
• Image number in the PLC	Yes
<b>Complex image objects</b>	
• Status/control	No
<b>Lists</b>	
• Number of text lists per project	150
• Number of graphics lists per project	100
<b>Security</b>	
• Number of user groups	50
• Number of user rights	32
• Password export/import	No
<b>Character sets</b>	
• Keyboard fonts	US American (English)
— US English	Yes

Transfer (upload/download)	
• MPI/PROFIBUS DP	No
• USB	No
• Ethernet	Yes
• using external storage medium	No
Process coupling	
• S7-200	Yes; Via CP
• S7-300/400	Yes
• WinAC	No
• SINUMERIK	No
• SIMOTION	No
• Allen Bradley (DF1)	No
• Mitsubishi (FX)	No
• OMRON (LINK/Multilink)	No
• Modicon (Modbus)	Yes; MODBUS TCP/IP protocol
Service tools/configuration aids	
• Backup/Restore manually	Yes
• Simulation	Yes
• Device switchover	Yes
Peripherals/Options	
Peripherals	none
• Printer	No
• SIMATIC HMI MM memory card: Multi Media Card	No
• SIMATIC HMI SD memory card: Secure Digital memory card	No
• USB memory	No
Mechanics/material	
Enclosure material (front)	
• Plastic	Yes
• Aluminum	No
Dimensions	
Width of the housing front	335 mm
Height of housing front	275 mm
Mounting cutout, width	310 mm
Mounting cutout, height	248 mm
Overall depth	60 mm
Weights	
Weight without packaging	2.65 kg
Weight incl. packaging	3.38 kg

last modified:

05/18/2018