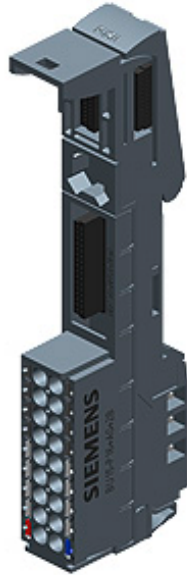


SIPLUS ET 200SP BU15-P16+A0+2B TX RAIL -40 ... +70 °C TX with 85 °C for 10 minutes with conformal coating Based on: 6ES7193-6BP00-0BA0 . BU type A0, Push-in terminals, without AUX terminals, bridged to the left, WxH: 15x117 mm



General information	
Product type designation	Type A0
Supply voltage	
Rated value (DC)	24 V
external protection for power supply lines	Yes; 24 V DC/10 A miniature circuit breaker with type B or C tripping characteristic
Current carrying capacity	
up to 60 °C, max.	10 A
Potential separation	
between backplane bus and supply voltage	Yes
Isolation	
Isolation tested with	707 V DC (type test) and according to EN 50155 (routine test)
Standards, approvals, certificates	
Railway application	
<ul style="list-style-type: none"> EN 50121-3-2 EN 50121-4 	Yes; EMC for rail vehicles Yes; EMC for signal and telecommunications systems

<ul style="list-style-type: none"> • EN 50124-1 • EN 50125-1 • EN 50125-2 • EN 50125-3 • EN 50155 • EN 61373 • Fire protection acc. to EN 45545-2 	<p>Yes; Railway applications - overvoltage category OV2; pollution degree PD2; rated surge voltage UNi = 0.5 kV; UNm = 24 V DC</p> <p>Yes; Rail vehicles - see ambient conditions</p> <p>Yes; Stationary electrical equipment - see ambient conditions</p> <p>Yes; Signal and telecommunications systems - see ambient conditions; vibrations and shocks: Application point outside of tracks (1 m to 3 m away from track)</p> <p>Yes; Rail vehicles - temperature class Tx, horizontal mounting position, salt spray Class ST2</p> <p>Yes; Rail vehicles - vibrations and shocks: Category 1 Class A/B</p> <p>Yes; Rail vehicles - verification on request</p>
--	---

Ambient conditions

Ambient temperature during operation	
• horizontal installation, min.	-40 °C; = Tmin
• horizontal installation, max.	70 °C; = Tmax; +85 °C for 10 min (Tx acc. to EN 50155)
Altitude during operation relating to sea level	
• Installation altitude above sea level, max.	2 000 m
• Ambient air temperature-barometric pressure-altitude	Tmin ... Tmax at 1 140 hPa ... 795 hPa (-1 000 m ... +2 000 m)
Relative humidity	
• With condensation, tested in accordance with IEC 60068-2-38, max.	100 %; RH incl. condensation/frost (no commissioning under condensation conditions)
Resistance	
Coolants and lubricants	
— Resistant to commercially available coolants and lubricants	Yes
Use in stationary industrial systems	
— to biologically active substances according to EN 60721-3-3	Yes; Class 3B2 mold, fungus and dry rot spores (with the exception of fauna); Class 3B3 on request
— to chemically active substances according to EN 60721-3-3	Yes; Class 3C4 (RH < 75 %) incl. salt spray acc. to EN 60068-2-52 (severity degree 3); *
— to mechanically active substances according to EN 60721-3-3	Yes; Class 3S4 incl. sand, dust, *
Use on land craft, rail vehicles and special-purpose vehicles	
— to biologically active substances according to EN 60721-3-5	Yes; Class 5B2 mold, fungus and dry rot spores (with the exception of fauna); Class 5B3 on request
— to chemically active substances according to EN 60721-3-5	Yes; Class 5C3 (RH < 75 %) incl. salt spray acc. to EN 50155 (ST2); *
— to mechanically active substances according to EN 60721-3-5	Yes; Class 5S3 incl. sand, dust; *
from supply voltage 1L+	
— Note regarding classification of environmental conditions acc. to EN 60721	* The supplied plug covers must remain in place over the unused interfaces during operation!

Dimensions

Width	15 mm
Height	117 mm

Weights

Weight, approx.	40 g
-----------------	------

Other

Note: For use in railway applications, also observe the product information "SIPLUS extreme RAIL" A5E37661960A Online Support article 109736776

last modified: 05/16/2018