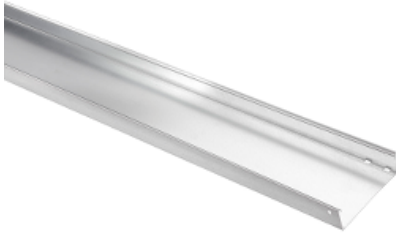


Product data sheet

Characteristics

CSU08602414

Stago - KG281 tray closed 60x120mm L=3m 1mm pre-galvanized RAL1013



Main

Range of product	Stago
Product or component type	Cable tray
Cable support type	Unperforated
Environmental characteristic	For partly outdoor environment with low exposure to corrosion, such as ware-houses and parking garages

Complementary

Product destination	KG281 cable tray
Fixing mode	Screwless
Material	Steel, pre-galvanized (RAL 1013)
Atmospheric-corrosivity category	C2
Thickness	1 mm
Nominal cross section	7200 mm ²
Height	60 mm
Width	120 mm
Length	3000 mm
Product weight	2.095 kg / 100 m

Offer Sustainability

RoHS (date code: YYWW)	Compliant - since 1101 - Schneider Electric declaration of conformity Schneider Electric declaration of conformity
REACH	Reference not containing SVHC above the threshold Reference not containing SVHC above the threshold
Product end of life instructions	Need no specific recycling operations

CSU08602414