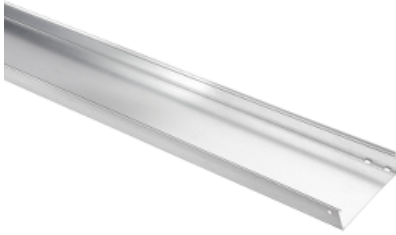


# Product data sheet

## Characteristics

# CSU08602474

Stago - KG281 tray closed 60x120mm L=3m 1mm pre-galvanized RAL9010



### Main

Range of product	Stago
Product or component type	Cable tray
Cable support type	Unperforated
Environmental characteristic	For partly outdoor environment with low exposure to corrosion, such as ware-houses and parking garages

### Complementary

Product destination	KG281 cable tray
Fixing mode	Screwless
Material	Steel, pre-galvanized (RAL 9010)
Atmospheric-corrosivity category	C2
Thickness	1 mm
Nominal cross section	7200 mm <sup>2</sup>
Height	60 mm
Width	120 mm
Length	3000 mm
Product weight	2.095 kg / 100 m

### Offer Sustainability

RoHS (date code: YYWW)	Compliant - since 1101 - Schneider Electric declaration of conformity <a href="#">Schneider Electric declaration of conformity</a>
REACH	Reference not containing SVHC above the threshold <a href="#">Reference not containing SVHC above the threshold</a>
Product end of life instructions	Need no specific recycling operations

# CSU08602474