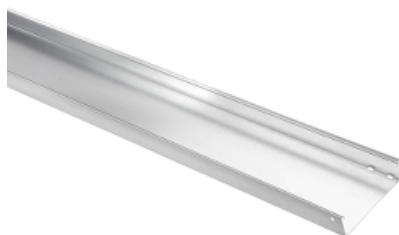


# Product data sheet

## Characteristics

# CSU0860344916

Stago - KG281 tray closed 60x200mm L=3m 1mm pre-galvanized RAL9016



### Main

|                              |  |
|------------------------------|--|
| Range of product             | Stago  |
| Product or component type    | Cable tray   |
| Cable support type           | Unperforated   |
| Environmental characteristic | For partly outdoor environment with low exposure to corrosion, such as ware-houses and parking garages |

### Complementary

|                                  |                                  |
|----------------------------------|----------------------------------|
| Product destination              | KG281 cable tray                 |
| Fixing mode                      | Screwless                        |
| Material                         | Steel, pre-galvanized (RAL 9016) |
| Atmospheric-corrosivity category | C2                               |
| Thickness                        | 1 mm                             |
| Perforation location             | Side perforation                 |
| Nominal cross section            | 12000 mm <sup>2</sup>            |
| Height                           | 60 mm                            |
| Width                            | 200 mm                           |
| Length                           | 3000 mm                          |
| Product weight                   | 2.742 kg / 100 m                 |

### Offer Sustainability

|                                  |   |
|----------------------------------|---|
| RoHS (date code: YYWW)           | Compliant - since 1101 - Schneider Electric declaration of conformity<br><a href="#">Schneider Electric declaration of conformity</a> |
| REACH                            | Reference not containing SVHC above the threshold<br><a href="#">Reference not containing SVHC above the threshold</a>                |
| Product end of life instructions | Need no specific recycling operations   |

# CSU0860344916