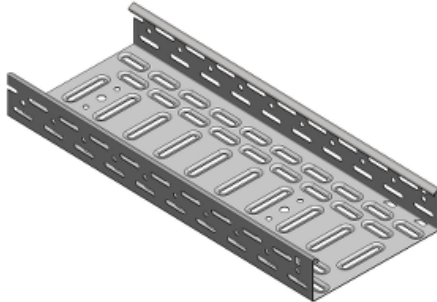


# Product data sheet

## Characteristics

# CSU26016004

Stago - KB284 tray reinforced 60x600mm L=3m  
1mm pre-galvanized



### Main

Range of product	Stago
Product or component type	Reinforced cable tray
Cable support type	Reinforced bottom
Environmental characteristic	For partly outdoor environment with low exposure to corrosion, such as ware-houses and parking garages

### Complementary

Product destination	KB284 cable tray
Fixing mode	Screwless
Material	Steel, pre-galvanized
Atmospheric-corrosivity category	C2
Thickness	1 mm
Perforation location	Side perforation Bottom perforation
Nominal cross section	36000 mm <sup>2</sup>
Height	60 mm
Width	600 mm
Length	3000 mm
Product weight	5.084 kg / 100 m

### Offer Sustainability

RoHS (date code: YYWW)	Compliant - since 0844 - Schneider Electric declaration of conformity <a href="#">Schneider Electric declaration of conformity</a>
REACH	Reference not containing SVHC above the threshold <a href="#">Reference not containing SVHC above the threshold</a>
Product end of life instructions	Need no specific recycling operations

# CSU26016004