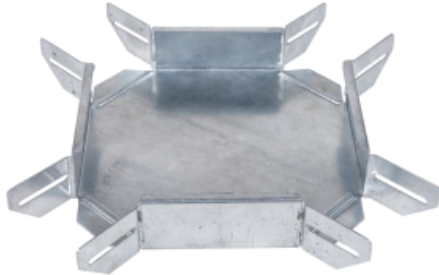


Product data sheet

Characteristics

CSU36161272

Stago - cross piece flat - 60x120 mm - steel - pre-galvanized - RAL9010



Main

Range of product	Stago
Product or component type	X-junction
Environmental characteristic	For partly outdoor environment with low exposure to corrosion, such as ware-houses and parking garages

Complementary

Operating angle	90 °
Direction change type	Horizontal
Adjustment	Foldable
Product destination	KG281 cable tray 60 mm height and 120 mm width
Mounting mode	Push-in
Fixing mode	Screwless By joint screwless
Material	Steel, pre-galvanized (RAL 9010)
Atmospheric-corrosivity category	C2
Height	60 mm
Width	120 mm
Product weight	0.908 kg / set of 100

Offer Sustainability

RoHS (date code: YYWW)	Compliant - since 1101 - Schneider Electric declaration of conformity Schneider Electric declaration of conformity
REACH	Reference not containing SVHC above the threshold Reference not containing SVHC above the threshold
Product end of life instructions	Need no specific recycling operations

CSU36161272