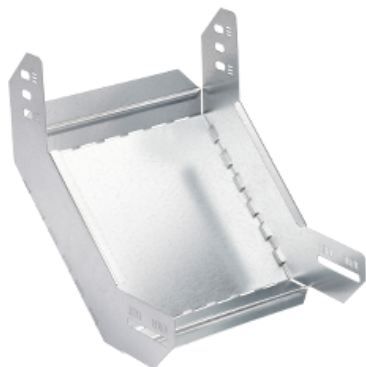


# Product data sheet

## Characteristics

# CSU3623332916

Stago - internal riser flat - 60x330 mm - steel - pre-galvanized - RAL9016



### Main

Range of product	Stago
Product or component type	Riser

### Complementary

Operating angle	90 °
Direction change type	Vertical
Inner radius	180 mm
Adjustment	Foldable
Product destination	KG281 cable tray 60 mm height and 330 mm width
Fixing mode	Screwless
Material	Steel, pre-galvanized (RAL 9016)
Atmospheric-corrosivity category	C2
Product weight	0.736 kg

### Environment

Environmental characteristic	For partly outdoor environment with low exposure to corrosion, such as ware-houses and parking garages
------------------------------	--

# CSU3623332916