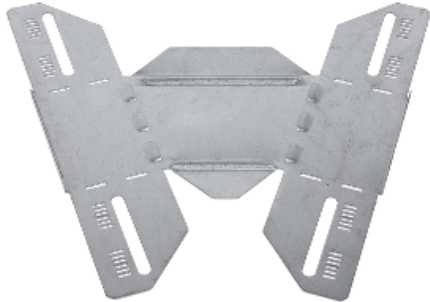


Product data sheet

Characteristics

CSU36252612

Stago - reducing piece flat - 60x250-70 mm - steel
- pre-galvanized - RAL1013



Main

Range of product	Stago
Product or component type	Reducing piece

Complementary

Device short name	KG281
Product destination	Cable tray KG281 height 60 mm & width 70 mm Cable tray KG281 height 60 mm & width 250 mm
Fixing mode	Screwless
Material	Steel with pre-galvanized RAL 1013
Height	14 mm
Width	430 mm
Depth	213 mm

Environment

Atmospheric-corrosivity category	C2
Environmental characteristic	Partly outdoor environment with low exposure to corrosion ware-houses and parking garages
Product weight	0.296 kg set of 1

Offer Sustainability

RoHS (date code: YYWW)	Compliant - since 1101 - Schneider Electric declaration of conformity Schneider Electric declaration of conformity
REACH	Reference not containing SVHC above the threshold Reference not containing SVHC above the threshold
Product end of life instructions	Need no specific recycling operations

CSU36252612