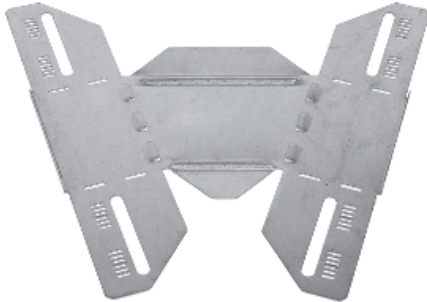


# Product data sheet

## Characteristics

# CSU36254802

## Stago - reducing piece flat - 60x250-120 mm - steel - pre-galvanized



### Main

Range of product	Stago
Product or component type	Reducing piece

### Complementary

Device short name	KG281
Product destination	Cable tray KG281 height 60 mm & width 120 mm Cable tray KG281 height 60 mm & width 250 mm
Fixing mode	Screwless
Material	Steel with pre-galvanized
Height	14 mm
Width	421 mm
Depth	241 mm

### Environment

Atmospheric-corrosivity category	C2
Environmental characteristic	Partly outdoor environment with low exposure to corrosion ware-houses and parking garages
Product weight	0.314 kg set of 1

### Offer Sustainability

RoHS (date code: YYWW)	Compliant - since 1101 - Schneider Electric declaration of conformity <a href="#">Schneider Electric declaration of conformity</a>
REACH	Reference not containing SVHC above the threshold <a href="#">Reference not containing SVHC above the threshold</a>
Product end of life instructions	Need no specific recycling operations

# CSU36254802