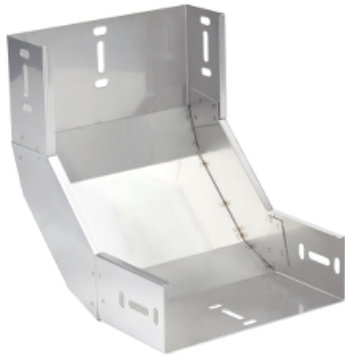


# Product data sheet

## Characteristics

# CSU76662030

Stago - internal riser formed - 60x200 mm - stainless steel AISI 304



### Main

Range of product	Stago
Range	Stago
Product or component type	Riser
Device application	Cable management

### Complementary

Operating angle	90 °
Direction change type	Vertical
Inner radius	180 mm
Adjustment	Fixed
Shape	Bended
Product destination	ES114 cable tray 60 mm height and 200 mm width
Fixing mode	By screw
Material	Stainless steel AISI 304
Atmospheric-corrosivity category	C5-I
Thickness	1 mm
Height	236 mm
Width	203 mm
Depth	236 mm
Product weight	1.45 kg / set of 1

### Environment

Environmental characteristic	For area with almost permanent high levels of humidity and airborne pollution, such as tunnels and dockyards
------------------------------	--

### Offer Sustainability

RoHS (date code: YYWW)	Compliant - since 1101 - Schneider Electric declaration of conformity <a href="#">Schneider Electric declaration of conformity</a>
REACH	Reference not containing SVHC above the threshold <a href="#">Reference not containing SVHC above the threshold</a>
Product end of life instructions	Need no specific recycling operations