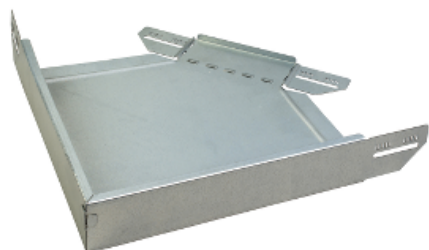


# Product data sheet

## Characteristics

# CSU86061006

Stago - 90° bend - 60x100 - sheet steel - zinc+ -  
T=1.5 mm



### Main

Range of product	Stago
Range	Stago
Product or component type	Bend
Device application	Cable management

### Complementary

Operating angle	90 °
Direction change type	Horizontal
Adjustment	Fixed
Product destination	KB184 Zinc+ cable tray 60 mm height and 100 mm width
Mounting mode	Push-in
Fixing mode	By screw
Shape	Bended
Material	Stainless steel, zinc+
Thickness	1.5 mm

# CSU86061006