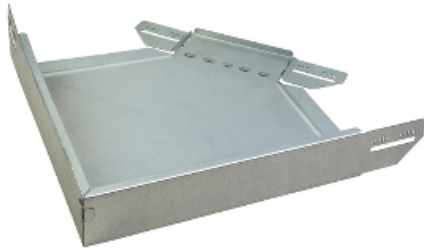


# Product data sheet

## Characteristics

# CSU86062004

Stago - 90° bend - 60x200 - sheet steel - zinc+ -  
T=1 mm



### Main

Range of product	Stago
Product or component type	Bend

### Complementary

Operating angle	90 °
Direction change type	Horizontal
Adjustment	Fixed
Product destination	KB184 Zinc+ cable tray 60 mm height and 200 mm width
Mounting mode	Push-in
Fixing mode	By screw
Material	Sheet steel, zinc+
Thickness	1 mm

### Offer Sustainability

RoHS (date code: YYWW)	Compliant - since 1642 - Schneider Electric declaration of conformity <a href="#">Schneider Electric declaration of conformity</a>
REACH	Reference not containing SVHC above the threshold <a href="#">Reference not containing SVHC above the threshold</a>
Product end of life instructions	Need no specific recycling operations

# CSU86062004