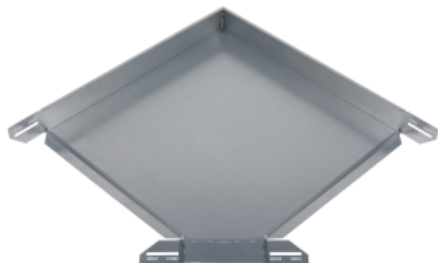


Product data sheet

Characteristics

CSU86064004

Stago - 90° bend - 60x400 - sheet steel - zinc+ -
T=1 mm



Main

Range of product	Stago
Range	Stago
Product or component type	Bend
Device application	Cable management

Complementary

Operating angle	90 °
Direction change type	Horizontal
Adjustment	Fixed
Product destination	KB184 Zinc+ cable tray 60 mm height and 400 mm width
Mounting mode	Push-in
Fixing mode	By screw
Shape	Bended
Material	Stainless steel, zinc+
Thickness	1 mm

CSU86064004