



### Main

Range of product	Lexium MAX S
Product or component type	Double portal axis
Product specific application	For 1 direction
Load position	On 2 parallel carriages
Drive type	Toothed belt on both axis
Guide type	Ball

### Complementary

Operating position	Horizontal by combination of 2 parallel axis X and X
Kit composition	PAS 4*B PAS 4*B axis shaft-driven
Function available	Anti-static belt Protective metal strip Different types of carriage adapted to the load 1 to 3 carriages Anti-corrosion version proof enhance Variable distance between the 2 axis Different types of motor mounting Different types of sensors for the limit switch function
Operating force	$\leq 4215$ N for $F_y$ $\leq 4215$ N for $F_z$ $\leq 1200$ N for $F_x$
Maximum actuation speed	5 m/s
Acceleration	$\leq 50$ m/s <sup>2</sup>
Drive torque	$\leq 30$ N.m
Torque value	$\leq 280$ N.m for $M_x$ $\leq 148$ N.m for $M_y$ (carriage type 1) $\leq 388$ N.m for $M_y$ (carriage type 2) $\leq 724$ N.m for $M_y$ (carriage type 4) $\leq 110$ N.m for $M_z$ (carriage type 1) $\leq 290$ N.m for $M_z$ (carriage type 2) $\leq 543$ N.m for $M_z$ (carriage type 4)
Operating travel	9...5500 mm
Distance between axis	110...1800 mm
Repeat accuracy	+/- 0.1 mm
Outer dimension	60 x 60 mm

Disclaimer: This documentation is not intended as a substitute for and is not to be used for determining suitability or reliability of these products for specific user applications

---

Mechanical service life	30000 km
-------------------------	----------

---

**Contractual warranty**

---

Warranty period	18 months
-----------------	-----------

---

---

## Dimensions

---

### Refer to the User Guide

To download the User guide follow below procedure:

1. Click on Download & Documents, in the “discover MAX... by” area on the left of this frame.
2. Select your document format in the user guide selection list.

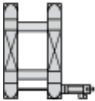
# MAXS2BB

---

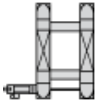
Types of Interface for the Drive Element

---

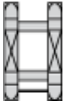
Drive Element Fixed on the Right



Drive Element Fixed on the Left



Without Drive Element

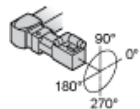


---

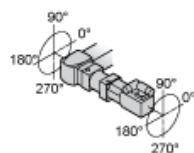
Possible Motor Drive Configurations and Orientations

---

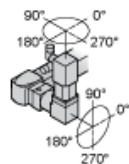
Motor Only without Gearbox



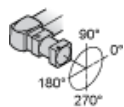
Motor with Planetary Gearbox



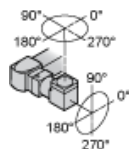
Motor with Angular Planetary Gearbox



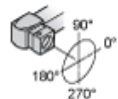
Planetary Gearbox Only



Angular Planetary Gearbox Only



Without Motor, Without Gearbox, With Adaptor Plate for the Drive Element



Without Motor, Without Gearbox



MAXS2BB