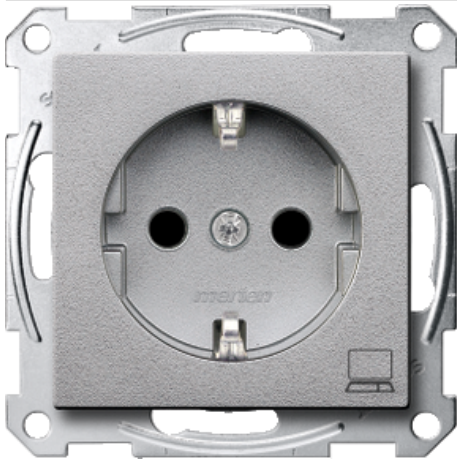


# Product data sheet

## Characteristics

MTN2350-0460  
 SCHUKO socket - outlet marked  
 Computer, shut., screwl.term., aluminium, System M



### Main

Range of product	Merten System M
Aesthetic name	M-Arc M-Elegance M-Plan M-Plan glass M-Smart M-Star System M
Product or component type	Power socket-outlet
Device presentation	Mechanism with central plate
Outlet standard	German
Socket additional information	Shuttered
Market segment	Residential Small commercial

### Complementary

Outlet poles configuration	2P + E
Number of gangs	1 gang
Wiring device mounting	Flush
Fixing mode	By screws and claws
[In] rated current	16 A
[Ue] rated operational voltage	250 V
Colour tint	Aluminium
Connections - terminals	Screwless terminals
Material	Polycarbonate brilliant

### Environment

IP degree of protection	IP20
Environmental health and issues	Halogen free

### Offer Sustainability

RoHS (date code: YYWW)	Compliant - since 0852 - Schneider Electric declaration of conformity
------------------------	---

MTN2350-0460

 Schneider Electric declaration of conformity

---

REACH	Reference not containing SVHC above the threshold Reference not containing SVHC above the threshold
-------	--

---

Product end of life instructions	Need no specific recycling operations
----------------------------------	---------------------------------------

---

Contractual warranty

---

Warranty period	18 months
-----------------	-----------

---