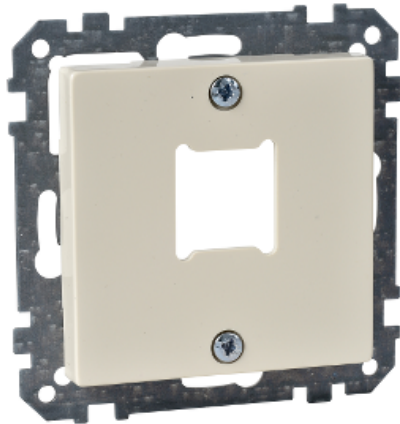


Product data sheet
Characteristics

MTN291544

Central plate for RJ 11/RJ 45 insert, 1-gang,
white, glossy, System M



Main

Range of product	Merten System M
Aesthetic name	M-Arc M-Elegance M-Plan M-Plan glass M-Smart M-Star System M
Product or component type	Central plate
Device presentation	Central plate
Colour tint	White glossy
Colour code	RAL 1013
Market segment	Residential Small commercial

Complementary

Product destination	Insert
Wiring device mounting	Flush
Fixing mode	By screws
Material	Polycarbonate brilliant

Environment

Environmental health and issues	Halogen free
---------------------------------	--------------

Offer Sustainability

RoHS (date code: YYWW)	Compliant - since 1101 - Schneider Electric declaration of conformity Schneider Electric declaration of conformity
REACH	Reference not containing SVHC above the threshold Reference not containing SVHC above the threshold

Contractual warranty

Warranty period	18 months
-----------------	-----------

MTN291544