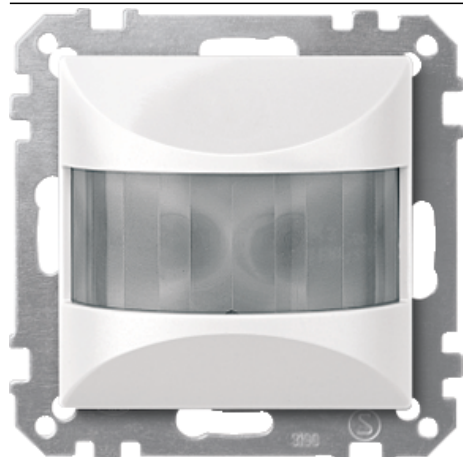


Product data sheet

Characteristics

MTN631619

KNX ARGUS 180, flush-mounted, polar white, glossy, System M



Main

Range of product	KNX
Aesthetic name	M-Arc M-Elegance M-Plan M-Plan glass M-Smart M-Star System M
Product or component type	Movement sensor
Bus type	KNX
Number of channels	5
Colour tint	Polar white glossy
Colour code	RAL 9010

Complementary

Type of setting	Light sensitivity adjustable
Wiring device mounting	Flush
Mounting height	2.5 m
Duty cycle	15300 minutes
Time delay	1 second switch-on
Movement detection area	16 m
Horizontal detection angle	0...180 °
Detection face	Lateral 8 m
Material	Plastic brilliant

Environment

Environmental health and issues	Halogen free
---------------------------------	--------------

Offer Sustainability

RoHS (date code: YYWW)	Compliant - since 1342 - Schneider Electric declaration of conformity Schneider Electric declaration of conformity
REACH	Reference not containing SVHC above the threshold

Reference not containing SVHC above the threshold

Contractual warranty

Warranty period	18 months
-----------------	-----------

Not classified OPS characteristics

Market segment	Residential Small commercial
----------------	---------------------------------
