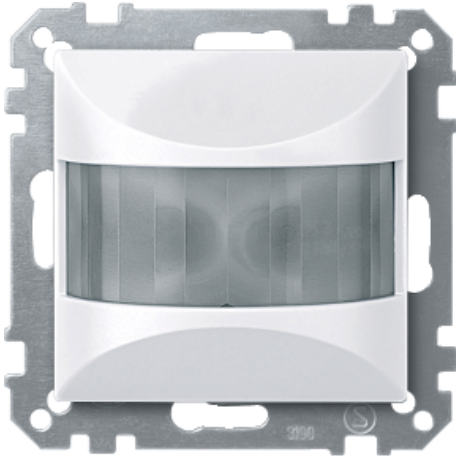


# Product data sheet

## Characteristics

# MTN631625

## KNX ARGUS 180, flush-mounted, active white, glossy, System M



### Main

Range of product	KNX
Aesthetic name	M-Elegance M-Star M-Plan glass M-Smart System M M-Arc M-Plan
Product or component type	Movement sensor
Bus type	KNX
Number of channels	5
Colour tint	Active white glossy
Colour code	RAL 9016

### Complementary

Type of setting	Light sensitivity adjustable
Wiring device mounting	Flush
Mounting height	2.5 m
Duty cycle	15300 minutes
Time delay	1 second switch-on
Movement detection area	16 m
Horizontal detection angle	0...180 °
Detection face	Lateral 8 m
Material	Plastic brilliant
Surface treatment	Antibacterial

### Environment

Environmental health and issues	Halogen free
---------------------------------	--------------

### Offer Sustainability

RoHS (date code: YYWW)	Compliant - since 1342 - Schneider Electric declaration of conformity <a href="#">Schneider Electric declaration of conformity</a>
------------------------	---

---

REACH	Reference not containing SVHC above the threshold Reference not containing SVHC above the threshold
-------	--

---

**Contractual warranty**

---

Warranty period	18 months
-----------------	-----------

---

**Not classified OPS characteristics**

---

Market segment	Small commercial Residential
----------------	---------------------------------

---